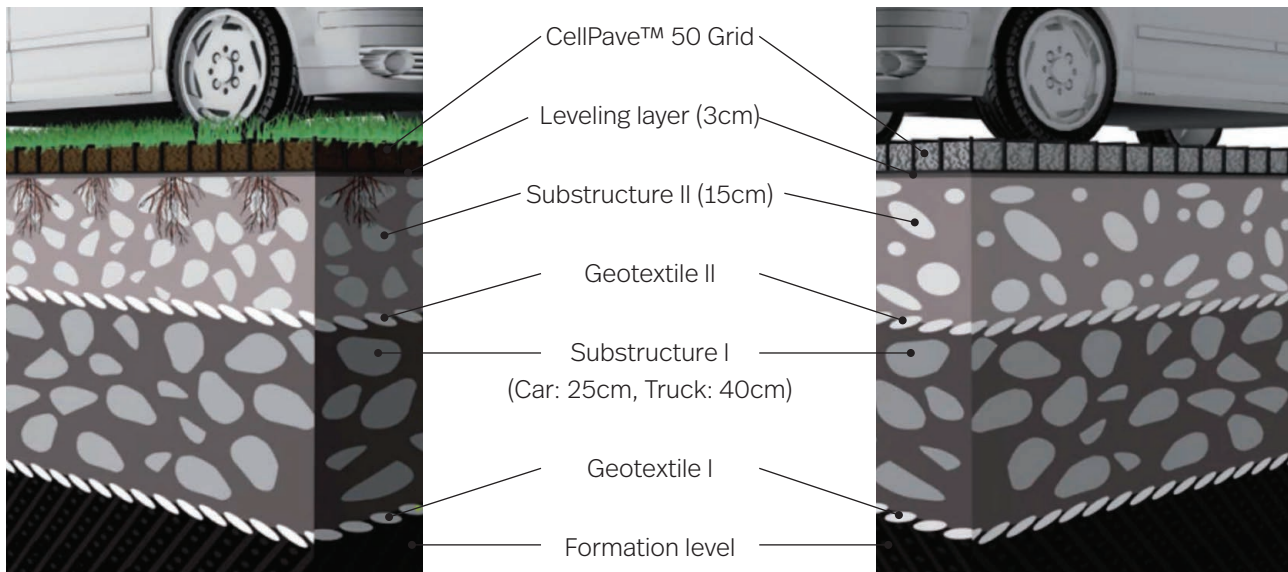


CellPave™ 50

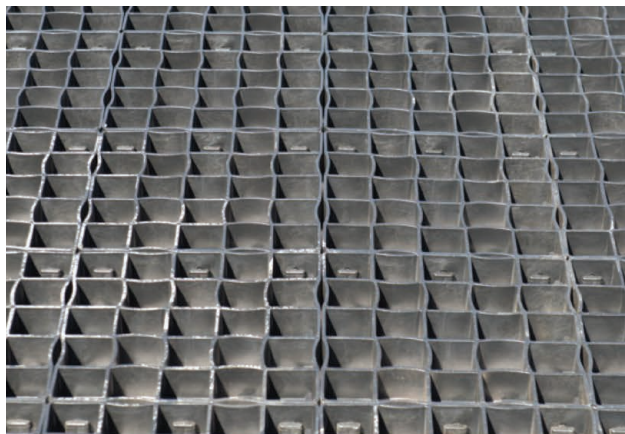
Installation guide



The steps described are suitable for soils with a water permeability of $K > 10^{-6}$ m/s (fast seepage). Additional safety drains are required for particularly clayey soils with very low water permeability ($K < 10^{-6}$ m/s).

1. Remove the surface and create a planum with a slope of approx. 1 %.
2. Lay pollutant-repellent geotextile on foundation soil.
3. Place the foundation layer (substructure I) and compact (roller/ vibrating plate). The height and thus the loadbearing capacity of the foundation layer can be individually adjusted.
4. Lay the second geotextile with drainage effect.
5. Place foundation II (see composition) and compact.
6. Place the leveling layer (see composition), draw it level, and compact. For lawn parking areas, this leveling layer should be watered before installing the CellPave™ 50 grid.
7. Install the CellPave™ 50 grid.
8. a) Sow seeds, fertilize, and water abundantly until the vegetation grows. The parking area may be used 8 - 10 weeks after mowing for the first time. Regular lawn care is necessary to keep the area green.
 b) Brush off the surface of the filling with gravel and roll without vibration. The parking areas can be driven over immediately.

The CellPave™ 50 Grid can also be installed without a substructure thanks to the safety interlocking system and outstanding load distribution. If a substructure is foregone, surface drainage is not guaranteed. Moreover, changes in the ground can result in unevenness and varying load capacities. However, this does not result in edges or dints due to the safety interlocking system.



Large support surface

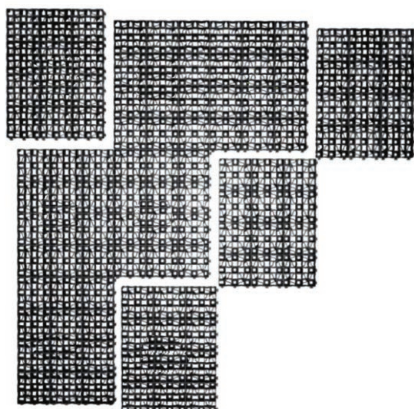
The extra large contact surface on the bottom of the CellPave™ 50 grid offers optimal surface-load distribution without unwanted subsidence. 44% of the entire surface touches with the ground.



Pre-assembled delivery

The CellPave™ 50 grid is delivered in 12-piece pre-assembled modules (4 x 3 pieces, equivalent to 1.3 m²). This means that large areas can be installed very quickly.

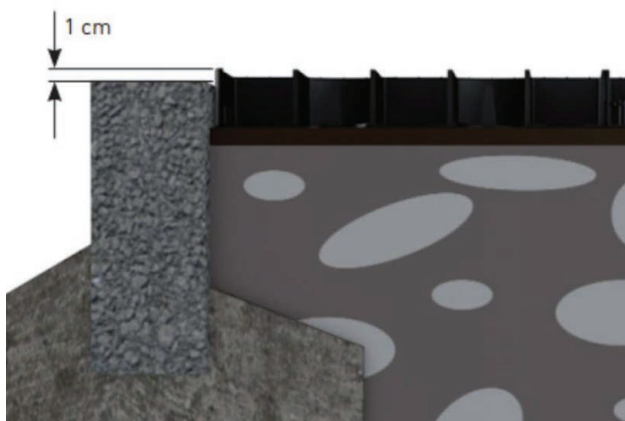
The modules can be easily separated, if needed. Place the module you wish to separate over a raised edge and push it out of the composite system by stepping on it.



Diagonal installation

Place the first module in a corner and align it so that the connecting pins face the desired direction of installation. We recommend laying the modules along a plumb line and in diagonal order. This prevents unintended shifting.

The stable plug-in system firmly and reliably links the CellPave™ 50 grid together. The components can be connected to one another simply by using foot pressure or a rubber hammer.



Edging

To make sure the edging is flush, install the CellPave™ 50 grid with a 1 cm overhang over the edging. To avoid offsets, check the angle accuracy of the edging.

The CellPave™ 50 grid can easily be cut to the desired size using a hand-held circular saw or flex saw.

Substructure and filling for seal-free parking spaces

	Turf parking space		Gravel or split gravel parking space	
	For cars		For cars	For trucks
CellPave Grid Type	40		40	50
Filled with	Rootzone		Gravel/split gravel (grain size 6/10)	Gravel/split gravel (grain size 6/10)
Leveling Layer Height	Approx. 3cm		Approx. 3cm	Approx. 3cm
Consisting of	75% Gravel/split gravel [$\frac{3}{8}$] 25% Rootzone Alternatively: 50% Gravel/split gravel [$\frac{3}{8}$] 25% Pozzolan 25% Soil/compost mix		Gravel/split gravel (grain size 2/4 or 4/6)	Gravel/split gravel (grain size 2/4 or 4/6)
Substructure II Height	Approx. 15cm		Approx. 15cm	Approx. 15cm
Consisting of	70% Gravel [20/40] 30% Soil/compost mixture		Gravel (grain size 0/32)	Gravel (grain size 0/32)
Geotextile II	With drainage effect			
Substructure II Height	approx. 25cm		approx. 25cm	approx. 25cm
Consisting of	Gravel (grain size 20/40 or 30/60)		Gravel (grain size 20/40 or 30/60)	Gravel (grain size 20/40 or 30/60)
Geotextile I	Pollutant-repellent			
Formation level	Natural ground (K = 10.6 m/s)*			

*Suitable for soils with a water permeability of $K > 10^{-6}$ m/s (fast seepage). Additional safety drains are required for particularly clayey soils with very low water permeability ($K < 10^{-6}$ m/s).

T: 01423 332100
www.green-tech.co.uk

Green-tech, Rabbit Hill Business Park,
Great North Road, Arkendale, Knaresborough, HG5 0FF

✉ sales@green-tech.co.uk ✉ @greentechltd 📘 @greentechuk 🌐 green-tech-ltd

